

## MS Windows

doc.dr. Samir Lemeš  
slemes@mf.unze.ba

Univerzitet u Zenici - 2012



## MS Windows

- Disk particije
- Atributi
- Administratorske privilegije
- Boot disk
- Safe mode
- System restore
- Page file
- Task Manager



## Disk particije

- File Allocation Table* (FAT) je arhitektura za pohranjivanje računarskih datoteka.

FAT	Max. ime	Max. datoteka	Max. particija
FAT16	8+3 (255)	2 GB	2 GB
FAT32	8+3 (255)	4 GB	8 TB
NTFS	255	16 EB (16×1024 <sup>6</sup> B)	16 EB
Ext3	255	2 TB	32 TB



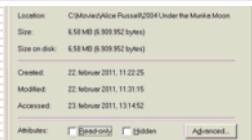
## Disk particije

Windows	Arhitektura	Fat16	Fat32	NTFS
3.1, 3.11	16	rw	-	-
95	16/32	rw	-	-
NT	32	rw	-	rw
95OEM	16/32	rw	rw	-
98, 98SE	16/32	rw	rw	-
ME	32	rw	rw	-
2000	32	rw	rw	rw
XP, Vista, 7	32, 64	rw	rw	rw



## Atributi

- DOS/Windows atributi:
  - R – Read Only
  - A – Archive
  - S – System
  - H - Hidden
- Dozvole pristupa: create, delete, open, close, set attributes, read, write, rename



## Atributi

- Unix / Linux atributi:
  - R – Read
  - W – Write
  - X – Execute
- Dozvole pristupa: vlasnik, grupa, ostali
  - rwX--rX-X
  - 111001101 = 715<sub>8</sub>
  - r--r--rwx



## Višekorisnički OS

- ❑ U MS-DOS baziranim verzijama (Windows 95/98), mogu se kreirati korisnici, ali ne postoji zaštita podataka
- ❑ Control Panel
- ❑ MS DOS nema odvojene korisnike
- ❑ Linux mora imati definisane korisnike



## Višekorisnički OS

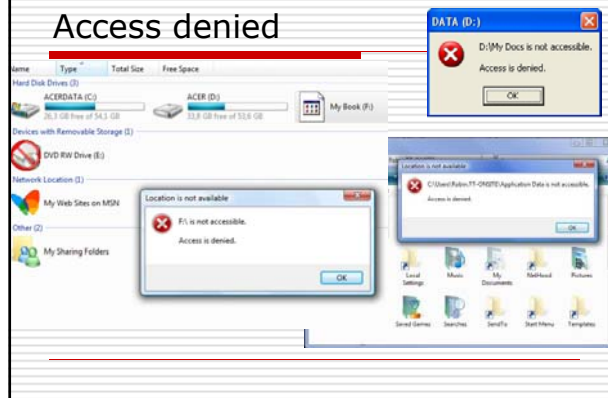
- ❑ U verzijama baziranim na NT kernelu (Windows NT/200x/XP/Vista/7), razdvojene su kategorije korisnika:
  - Administrator
  - Power user
  - Guest
- ❑ Unix / Linux administrator se naziva root



## Administratorske privilegije

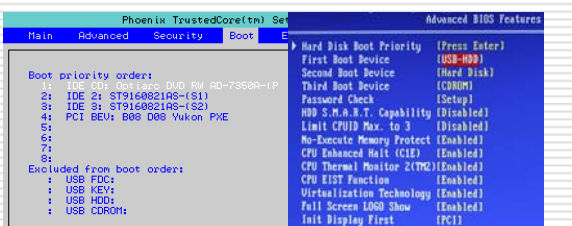
- ❑ Korisnik sa admin. privilegijama (Administrator, root) ima potpunu kontrolu nad operativnim sistemom
- ❑ Može (de)instalirati programe, pokretati/zaustavljati procese, dodavati/brisati korisnike, mijenjati passworde ostalim korisnicima
- ❑ Individualni korisnici / grupe

## Access denied



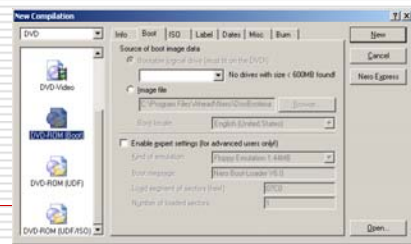
## Boot disk

- ❑ Win98 Startup floppy (FORMAT /S)
- ❑ Boot CD, Boot DVD
- ❑ BIOS boot sequence

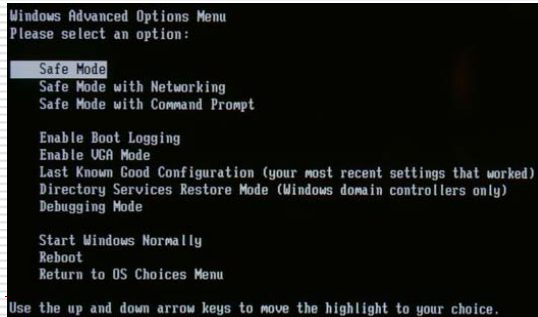


## Boot disk

- ❑ F6 – floppy SCSI/SATA driver
- ❑ nLite: <http://www.nliteos.com>
- ❑ ISO image



## Safe Mode



## Safe Mode

- ❑ Shift-F5, F8
- ❑ **Safe Mode**  
grafičko okruženje bez drivera
- ❑ **Safe Mode with Networking**  
samo driver za mrežnu karticu
- ❑ **Safe Mode with Command Prompt**  
bez grafičkog okruženja i bez autoexec.bat
- ❑ **Start Windows Normally**  
normalan operativni sistem

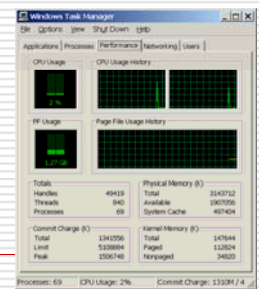
## System Restore

- ❑ Postoji u Windows ME, XP, Vista, 7
- ❑ Može se isključiti
- ❑ My Computer / Properties
- ❑ U slučaju zaraze virusom mora se isključiti – u protivnom se vraća i zaraženi kod
- ❑ F8 ili  
Install Boot CD



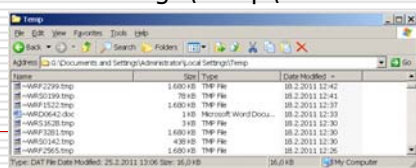
## Page file

- ❑ Virtual memory, swap file, page file
- ❑ Koristi se da nadoknadi nedostatak RAM-a
- ❑ My Computer / Properties / Advanced
- ❑ Manual / Let Windows Manage... (1:1,5)



## TMP

- ❑ OS i aplikacije kreiraju veliki broj privremenih datoteka
- ❑ DEL C:\Windows\Temp\\*.\*
- ❑ DEL C:\Documents and settings\user\Local settings\Temp\\*.\*



## Task Manager

- ❑ Ctrl-Alt-Del
- ❑ Ctrl-Shift-Esc
- ❑ End Task
- ❑ Processes
- ❑ svchost
- ❑ Virusi (svchosts)
- ❑ Explorer
- ❑ cmd/TASKLIST

