

Command Prompt

doc.dr. Samir Lemeš
slemes@mf.unze.ba

Univerzitet u Zenici - 2012

Command Prompt

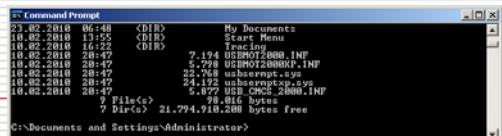
- Pojam i upotreba command prompt-a
- Načini pokretanja
- DIR, CD, MD, RD
- COPY, MOVE
- DEL, REN, ATTRIB
- BATCH datoteke

Pojam i upotreba command prompt-a

- "Command Prompt" (cmd.exe) je interpreter naredbi kod NT-baziranih operativnih sistema
- Analogan programu COMMAND.COM kod MS-DOS i Windows 9x sistema
- Windows PowerShell – napredniji interpreter uz Windows 7 i Windows Server 2008 R2

Pojam i upotreba command prompt-a

- Command Prompt koristi MS-DOS naredbe
- U slučaju zaraze virusom, brisanja, promjene imena ili premještanja sistemskih datoteka, to je često jedini način manipulacije datotekama



```
Command Prompt
C:\Documents and Settings\Administrator>dir
.                <DIR>          My Documents
..               <DIR>          Start Menu
.               <DIR>          Tracing
10.02.2010 16:55 <DIR>
10.02.2010 16:55 <DIR>
10.02.2010 20:47 7,194 USMOT2000.INF
10.02.2010 20:47 5,798 USMOT2000P.INF
10.02.2010 20:47 25,768 unbscrpt.sys
10.02.2010 20:47 24,132 unbscrptexp.sys
10.02.2010 20:47 5,872 US1_CMOS_2000.INF
10.02.2010 20:47
? File(s)          78,816 bytes
? Dir(s)          21,794,910,200 bytes free
C:\Documents and Settings\Administrator>
```

Načini pokretanja

- Shift-F5
- F8 / Command prompt only
- Start / Programs / Accessories / Command Prompt
- Start / Run / cmd

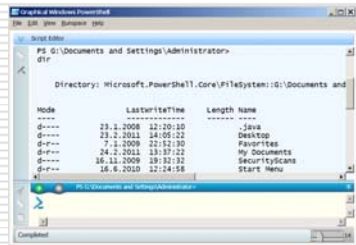
- Prompt C:\>_

Nedostaci

- Nema pristupa CD, DVD i USB flash particijama:
 - Config.sys
device=c:\cdrom\cdrom.sys /d:mcsd001
c:\windows\command\mscdex.exe /d:mcsd001
- Nema pristupa mreži
- NET USE izlistava mapirane diskove
 - net use d: \\server\share /USER:Guest
- TASKLIST

Windows PowerShell

- Start
- All Programs
- Accessories
- Windows PowerShell
- Windows PowerShell (ISE)



BATCH datoteke

- Tekstualne datoteke za programiranje pomoću command prompt naredbi
- Ekstenzija .BAT ili .CMD
- Primjeri:
echo Zdravo @echo off
echo . echo Zdravo
pause echo .
 pause>NUL

BATCH datoteke

