

RAPID PROTOTYPING FOR SLING DESIGN OPTIMIZATION

ZAIMOVIĆ-UZUNOVIĆ, Nermina; LEMEŠ, Samir; ĆURIĆ, Damir & TOPČIĆ, Alan

Abstract: This paper deals with combination of two modern engineering methods in order to optimise the shape of a representative casting product. The product being analysed is a sling, which is used to attach pulling rope in timber transportation. The first step is to perform optimization of shape by means of numerical method. The model, which was manufactured using rapid prototyping technique, was then tested in order to validate numerical results.

Key words: Rapid prototyping, Design optimization, Sling.

1. INTRODUCTION

The main objective of design optimization is to reduce manufacturing costs, thus increasing product competitiveness at the market. In each optimization method, it is necessary to choose the optimization parameter. The major optimization parameter usually refers to costs, although the cost analysis is not always achievable.

Structural analysis is used in product development to predict the product states in response to external loads. It is usually performed using finite element analysis of model generated by CAD software. In modern product development process, the use of physical prototype is minimized or even eliminated due to the ever-increasing demands for high quality, low cost products with short development time (Saitou et al. 2005). The number of design iterations can be reduced significantly if proper optimization method is implemented. However, the numerical method and structural analysis of virtual model in most cases requires the physical prototype in order to confirm the analysis results.

Rapid prototyping techniques are increasingly affordable nowadays and they can be of great help to validate numerical analysis results. These technologies shortened the development cycle.

Structural optimization is a class of optimization problems where the evaluation of an objective function(s) or constraints requires the use of structural analyses (typically FEA). It can be symbolically expressed in a compact form as (Papalambros & Wilde 2000):

$$\begin{aligned} & \text{minimize } f(x) \\ & \text{subject to } g(x) \leq 0 \\ & h(x) = 0 \\ & x \in D \end{aligned} \quad (1)$$

where x is a design variable, $f(x)$ is an objective function, $g(x)$ and $h(x)$ are constraints, and D is the domain of the design variable. Both $g(x)$ and $h(x)$ are vector functions. The design variable x is typically a vector of parameters describing the geometry of a product. For example, x , $f(x)$, $g(x)$, and $h(x)$ can be product dimensions, product weight, a stress condition against yielding, and constraints on product dimensions, respectively. Depending on the definition of design variable x , its domain D can be continuous, discrete or the mixture of both. Also, a variant of structural optimization has multiple objectives, where the objective function is a vector function $f(x)$, rather than a scalar function $f(x)$ (Saitou et al. 2005).

Variations of structural optimization expressed in the form of equation (1) can be roughly classified into geometry parameterization (size, shape or topology), approximation methods, optimization algorithms, and the integration with non-structural issues (Saitou et al. 2005). In sizing parameterization, design variable x is a predefined set of the dimensions that describe product geometry. Sizing optimization is typically done in conjunction with feature-based variational geometry (Chen & Tortorelli 1997).

A review of shape optimization based on the direct geometry manipulation approaches can be found in (Haftka & Grandhi 1986), where the boundary representations are classified as polynomials, splines, and design elements.

As a hybrid of the direct and indirect geometry manipulation approaches, the Traction Method was proposed (Azegami et al. 1995, Inzarulfaisham & Azegami 2004), where the boundary sensitivities are replaced with the velocities of boundary changes in response to the fictitious loads that deform the original shape to the target shape defined by the boundary sensitivities. By this replacement, sufficient smoothness of the boundary can be achieved via the direct manipulation of the product boundary. Optimization methods used recently include Nonlinear Programming Algorithms, Reliability and Robustness Optimization Methods and other methods.

2. PROBLEM STATEMENT

2.1 Structural optimization

Structural design optimization of slinger is performed through following phases:

- Defining initial design including 3D modelling, setting elements for static analysis, choosing material, finite element meshing, initial static analysis;
- Choosing manufacturing technology, choosing material, defining optimization boundary conditions;
- Optimization of design shape in order to minimize total slinger weight (objective function) whilst keeping equivalent Von-Mises stress at initial level (constraint function);
- According to optimization results, estimating the final design which corresponds to adopted manufacturing technology, producing model and prototype of slinger. Performing redesigning including static analysis;
- Rapid prototyping of the new product;
- Testing new product characteristics.

2.2 Methods and techniques used

Structural design optimization of slinger is performed using following methods and techniques:

- 3D modelling and static analysis was performed using CAD/CAE software NX-;
- Slinger shape optimization was performed using Traction method, by means of software Optishape-TS;

- To define constraints for shape optimization; i.e. to exclude certain areas out of optimization domain, FEA software FEMAP was used.

2.3 Description of product being optimized

The slings consist of steel rope and other elements, and they are being used for various purposes: industrial use, timber processing, construction works, mostly for heavy-weight lifting. The rope ends are pressed within aluminium or steel shells in order to protect the rope wires. Depending on the purpose, slings can be equipped with additional accessories, such as hooks, rings, sliders etc. All commercially used slings have to be tested according to appropriate standards.

3. INITIAL SLING DESIGN

For initial static analysis, the 3D model presented in Fig. 1 was used, with following material characteristics:

- specific mass 7850 kg/m^3
- Young's modulus $2E+11 \text{ N/m}^2$
- Poisson ratio 0.25
- Plasticity limit 225 N/mm^2
- Yield point 440 N/mm^2
- Allowed tension stress 150 N/mm^2

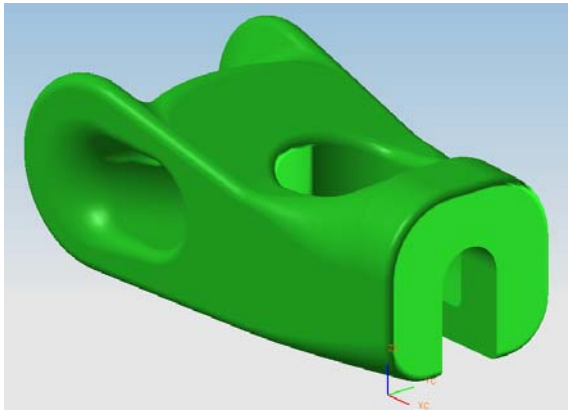


Fig. 1. 3D model of initial design.

3.1 Static analysis

Initial static analysis was performed with 110 kN force acting perpendicular to curved opening surface, and with pin constraint at the shell supporting point. The initial static analysis results are shown in Figs. 2 and 3.

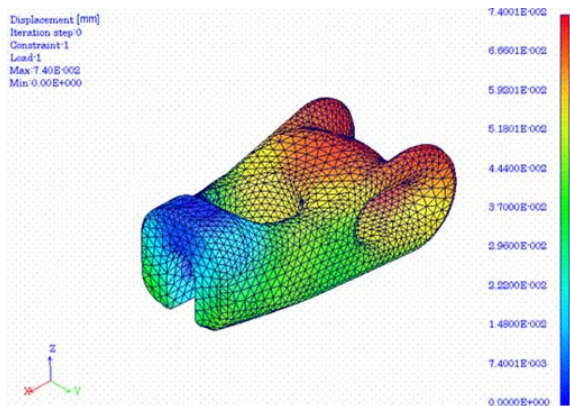


Fig. 2. Initial static analysis results - displacements.

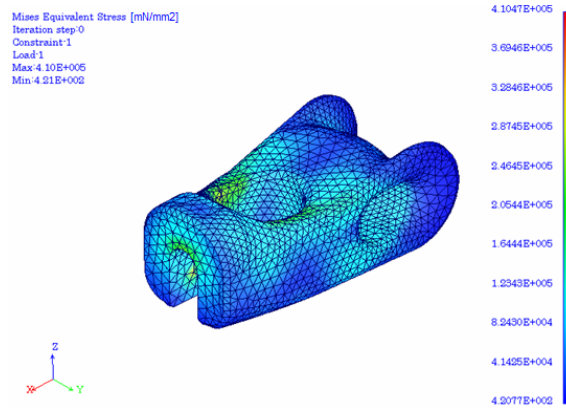


Fig. 3. Initial static analysis results – equivalent stress.

4. SHAPE OPTIMIZATION

Fig. 4. shows the initial 3D model with optimization constraints. The highlighted lines represent areas which are excluded from shape optimization process in order to maintain the function (holding and fixating the steel rope).

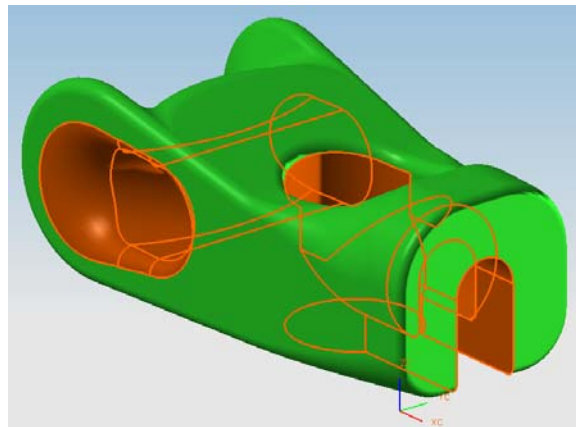


Fig. 4. Optimization constraints.

4.1 Optimization results

After 30 steps of optimization performed using software Optishape-TS, the graph was plotted, as shown in Fig. 5.

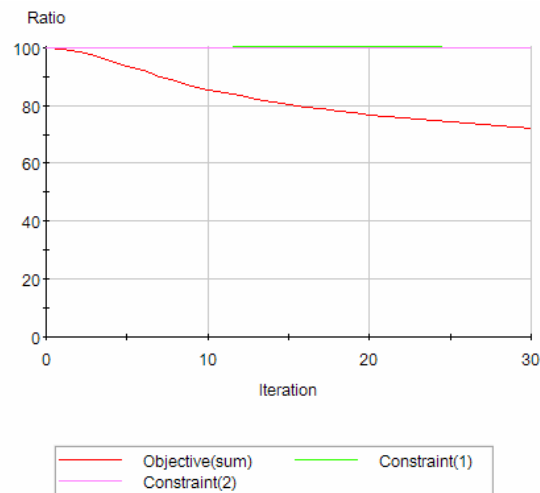


Fig. 5. Optimization graph.

The 72% mass reduction of initial mass was achieved, but it had to be increased onto 80%, due to manufacturing technology limitations. Fig. 6. shows the initial design and Fig. 7. shows the optimized shape.

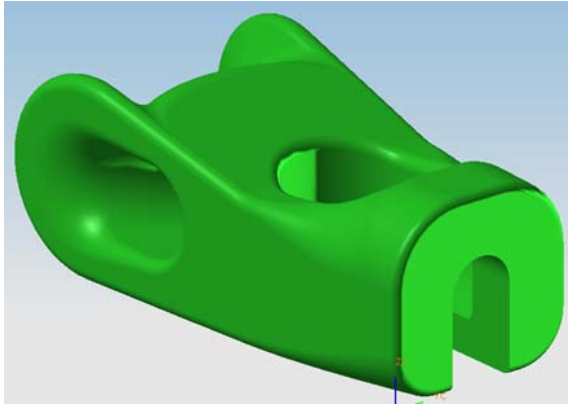


Fig. 6. Initial sling design

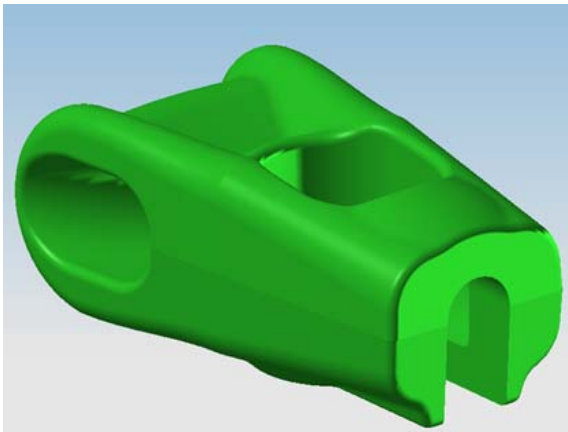


Fig. 7. Optimized shape

4.2. Final static analysis

The calculated values of deformations and equivalent stresses are even smaller after redesign, because dimensions and total weight are increased for about 10%.

Fig. 8. shows the equivalent stress distribution in redesigned sling. When these results are compared with initial design (shown in Fig. 3.), it is obvious that stresses are distributed smoothly across the whole sling body.

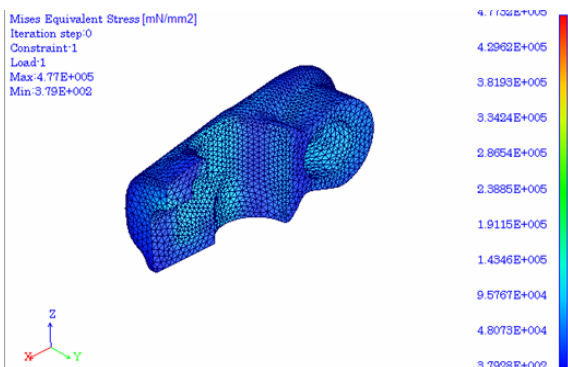


Fig. 8. Equivalent stress distribution in redesigned sling

Allowed stress for this sling is only 22 kN (3.5 times less than initial value). Therefore the maximum equivalent stress is

around 125 N/mm² which is significantly lower than allowable stress for chosen material. The equivalent stress, in most areas of sling being redesigned, is significantly lower than allowable stress. There are some peak values of stresses in the areas next to ring-shaped area where steel rope is in contact with the shell. It happens due to stress concentration because of small curvature radius and FEM mesh quality.

Fig. 9. shows the analysis results, illustrating the deformation due to tension.

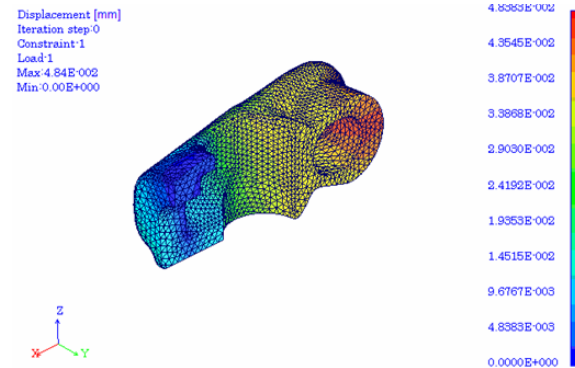


Fig. 9. Deformation of sling under tension

5. RAPID PROTOTYPING

3D models for rapid prototyping were prepared according to rules for casting technology. It was necessary to adjust the angles, and to predict casting channels. The 3D CAD models created for upper and lower part of redesigned sling model are presented in Figs. 10. and 11. Fig.12. shows additional models necessary to manufacture the mould.

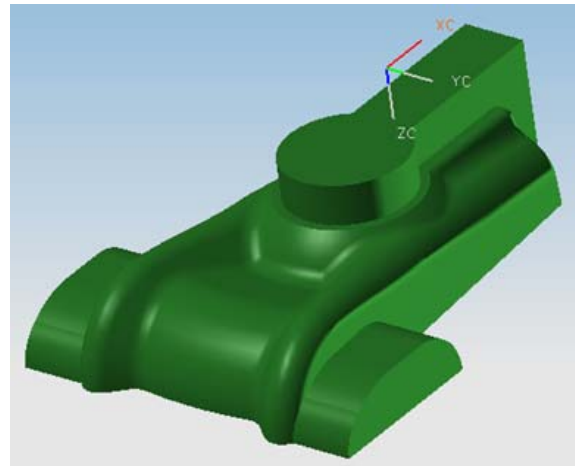


Fig. 10. CAD model for lower part of redesigned sling.

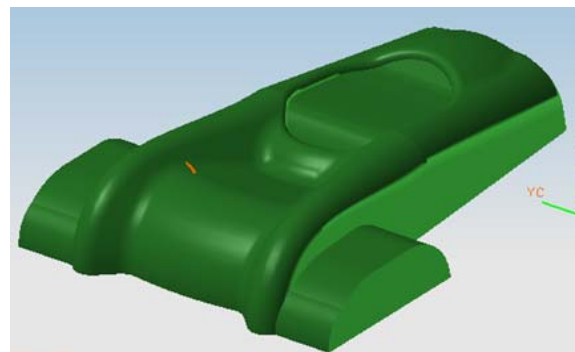


Fig. 11. CAD model for upper part of redesigned sling.

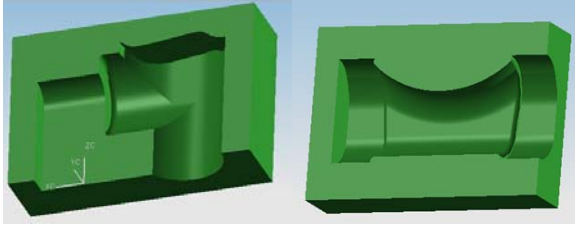


Fig. 12. Other models necessary to manufacture the mould

The 3D CAD models shown in Figs. 10. to 12. were transformed to STL files and they were used in rapid prototyping machine. The Fused Deposition Modelling (FDM) method was used to build a model. The build material is thermoplastics. Figs. 13. and 14. show prototypes created after shape optimisation performed in this research.

The following step is to manufacture the tool for casting the real model, which will later be tested in order to confirm the shape optimization results. The rapid prototype will be used as starting shape for the mould.



Fig. 13. Rapid prototypes of upper and lower part.



Fig. 14. Connected parts of rapid prototype.

6. CONCLUSION

The concept of design and optimization presented here can be used in wide range of design optimization cases, where it is not possible to use methods based on design parameterization, due to irregular and complex configuration. These products do not consist of regular simple geometric features.

To solve this problem, a number of commercial CAE software solutions were developed. This research used set of software packages (NX-4, Optishape-TS, Femap) to perform design shape optimization. These software packages were used to obtain the global optimum (optimum solution which will obey constrains). The software Optishape-TS also offers a library of possible shapes which include shape parameters with possibility to exclude some parts of the model from optimization process. They are usually those parts/areas which will not change its shape during optimization.

This method shortens the development cycle, and gives an opportunity to reduce the mass or other cost-related parameter.

During this optimization process, it is possible to define more optimization objectives (objective functions) and constraint functions. It is also possible to exclude some areas of the shape being optimized from optimization process. In this case, dimensions of front and back openings (used for the steel rope connection with this sling) had fixed values.

The goal of this research was to reduce the mass and this goal was realized; the slinger mass is reduced by 20-30%, even obeying the rules for casting technology (angles, wall, thickness, casting channels,...).

The rapid prototyping techniques are now affordable methods for fast product development. The engineering practice uses a lot of computational methods to achieve the design which will fulfil all demands. Anyway, no numerical method is 100% sure, and it is necessary to manufacture the physical model to be tested before the product is manufactured in larger series.

The rapid prototyping techniques, such as Fused Deposition Modelling (FDM) method, create the physical model of product which can be used for manufacturing moulds or other tools.

This research should be followed by casting the real products, and testing their performance, in order to confirm the shape optimization results.

7. REFERENCES

- Saitou, K.; Izui, K.; Nishiwaki, S.; Papalambros, P. (2005). A Survey of Structural Optimization in Mechanical Product Development; *Journal of Computing and Information Science in Engineering*, Vol. 5, (September 2005) 214-226, ISSN 1530-9827, USA
- Papalambros, P. Y.; Wilde, D. J. (2000). *Principles of Optimal Design: Modelling and Computation*, 2nd ed., Cambridge University Press, ISBN 0521423627, Cambridge, UK.
- Chen, S.; Tortorelli, D. (1997). Three-Dimensional Shape Optimization With Variational Geometry, *Struct. Optim.*, 13(2-3), 81-94. ISSN 0934-4373, Springer, Berlin, Germany
- Haftka, R. T.; Grandhi, R. V. (1986) Structural Shape Optimization: A Survey, *Comput. Methods Appl. Mech. Eng.*, 57(1), 91-106. ISSN 0045-7825, Elsevier
- Azegami, H.; Shimoda, M.; Katamine, E.; Wu, Z. C. (1995), A Domain Optimization Technique for Elliptic Boundary Value Problems, *Computer Aided Optimization Design of Structures IV, Structural Optimization*, Hernandez, S.; El-Sayed, M.; Brebbia, C. A., eds., Computational Mechanics Publications, Southampton, 51-58. ISBN 3540429921
- Inzarulfaisham, A. R.; Azegami, H. (2004) Solution to Boundary Shape Optimization Problem of Linear Elastic Continua With Prescribed Natural Vibration Mode Shapes, *Structural and Multidisciplinary Optimization*, 27(3), 210-217. ISSN 1615-147X, Springer Berlin / Heidelberg, Germany


DAAAM AUTHOR QUESTIONNAIRE

PAPER DATA


Name and email address of corresponding author: Nermina Zaimovic-Uzunovic, nzaimovic@mf.unze.ba
This paper will be presented (oral presentation / poster): oral presentation
This paper will NOT be presented at Conference please send the Proceedings to following address:
Please send PDF Offprints of Paper to following e-mail address: nzaimovic@mf.unze.ba


AUTHORS DATA

Please fill this questionnaire (use as much space/pages as you need). Author's data must be completed for all authors and coauthors! All data from No1 till 10 must be completed. (Digital photo we need for DAAAM International Authors Gallery / Full names for the indexing and referring of your paper in different data bases and DAAAM International Bibliography which will be published in order to celebrate 20 Years of DAAAM International)


1. Digital Photo (not to small):
2. First / Middle / Family Name (Full names not initials only!): Nermina Zaimović-Uzunović
3. Academic Titles: Ph.D.
4. Position / Since: Profesor / 1993
5. Institution: University of Zenica, Bosnia and Herzegovina
6. Place, Date and Country of Birth (yyyy-mm-dd): 1954-02-14, Sarajevo, Bosnia and Herzegovina
7. Nationality / Citizenship: Bosnian
8. Field of interests (key words): Metrology, Mechanics, Product development
9. Hobbies: Gender equality
10. E-mail address: nzaimovic@mf.unze.ba
11. Site: http://www.unze.ba/am/ba/ncv.php
12. Phone & Fax #: +387 32 449 138, Fax -387 32 246 612
13. Postal address: Fakultetska 1, 72000 Zenica, Bosnia and Herzegovina
14. In wich DAAAM activities are you interested: publishing of paper, reviewer of papers and manuscripts
15. Place & Date: Zenica, 2007-03-13


1. Digital Photo (not to small):
2. First / Middle / Family Name (Full names not initials only!): Samir Lemeš
3. Academic Titles: M.Sc.
4. Position / Since: Senior Teaching Assistant / 2002
5. Institution: University of Zenica, Bosnia and Herzegovina
6. Place, Date and Country of Birth (yyyy-mm-dd): 1968-06-27, Zenica, Bosnia and Herzegovina
7. Nationality / Citizenship: Bosnian
8. Field of interests (key words): Measurements, Numerical simulations, Computer Graphics, Internetworking
9. Hobbies: Music
10. E-mail address: slemes@mf.unze.ba
11. Site: http://www.unze.ba/am/ba/scv.php
12. Phone & Fax #: -387 32 449 147, Fax: +387 32 246 612
13. Postal address: Fakultetska 1, 72000 Zenica, Bosnia and Herzegovina
14. In wich DAAAM activities are you interested: publishing of paper
15. Place & Date: Zenica, 2007-03-13


1. Digital Photo (not to small):
2. First / Middle / Family Name (Full names not initials only!): Damir Ćurić
3. Academic Titles: M.Sc.
4. Position / Since: manager / 2001
5. Institution: Foundry "Novi zivot" Zenica, Bosnia and Herzegovina
6. Place, Date and Country of Birth (yyyy-mm-dd): Zenica, 1965-03-10, Bosnia and Herzegovina
7. Nationality / Citizenship: Bosnian
8. Field of interests (key words): 3D modeling, plastic injection moulding simulation, tool and mould design
9. Hobbies: music
10. E-mail address: d.curic@bih.net.ba
11. Site:
12. Phone & Fax #: +387 61 78 90 94; +387 32 24 24 46
13. Postal address: Jalijski put 6, 72000 Zenica, Bosnia and Herzegovina
14. In wich DAAAM activities are you interested (We have many of possibilities such as: publishing of paper, to be active member of one of our international committees, official photograph of daaam international, reviewer of papers and manuscripts, supporter, sponsor, organizer. others). Please write your choice: publishing of paper
15. Place & Date: Zenica, 2007-03-13
16. Additional CV data (optional):


1. Digital Photo (not to small):
2. First / Middle / Family Name (Full names not initials only!): Alan Topčić
3. Academic Titles: M.Sc.
4. Position / Since: Senior Teaching Assistant / 2003
5. Institution: University of Tuzla , Bosnia and Herzegovina
6. Place, Date and Country of Birth (yyyy-mm-dd): 1973-10-25, Gradacac, Bosnia and Herzegovina
7. Nationality / Citizenship: Bosnian
8. Field of interests (key words): Rapid Prototyping, Reverse Engineering, Production Systems
9. Hobbies: -
10. E-mail address: alan.topcic@untz.ba
11. Site: http://www.mf.untz.ba/web/
12. Phone & Fax #: ++387 (0)35 320 920, ++387 (0)35 320 921
13. Postal address: Univerzitetska 4, 75000 Tuzla Bosnia and Herzegovina
14. In wich DAAAM activities are you interested: publishing of paper
15. Place & Date: Tuzla, 2007-03-13
16. Additional CV data (optional):